



# PRINCE GLOBAL

## INTEGRATED SERVICES LTD.

CORPORATE PROFILE

# CONTENT

- Corporate Information
- Company Overview
- Organizational Chart
- Company Quality Statement
- Services
- Clientele
- HSE and Quality
- Conclusion and Future Focus
- Appendix

# Company Overview

Prince Global Integrated Services Limited (PGIS) is an indigenous multi-disciplinary company having its operational base in Port Harcourt, Nigeria. PGIS specializes in the business of Supply of gravels, sands, etc.; Hire of heavy and light duty vehicles; Offshore/onshore Equipment Supply; Vessels/work Tool Equipment Supply; Foodies/toiletries Supply; Ago Supply; Marine Ropes and Paints Supply; Safety Equipment/tools Supply; Marine Equipment Production/manufacturing; Gas Cylinder Service & Refilling; Oil Tool/npi and Drifting Inspection; Logistics/web Development and general supplies of goods and services. It has been in the business delivery for customers in various fields since its incorporation with five 'going' trucks and a sizable number of utility vehicles on the roads.

PGIS has perfected a business monitoring and control system which may be applied to a much larger number of trucks and other type of vehicles, to ensure delivery and accountability through effective monitoring and maintenance systems.

Now, with a capital asset and access to various types of utility vehicles, stability has been attained and the company is well on its way to greatly multiply its business.

## The PGIS's business definition statement:

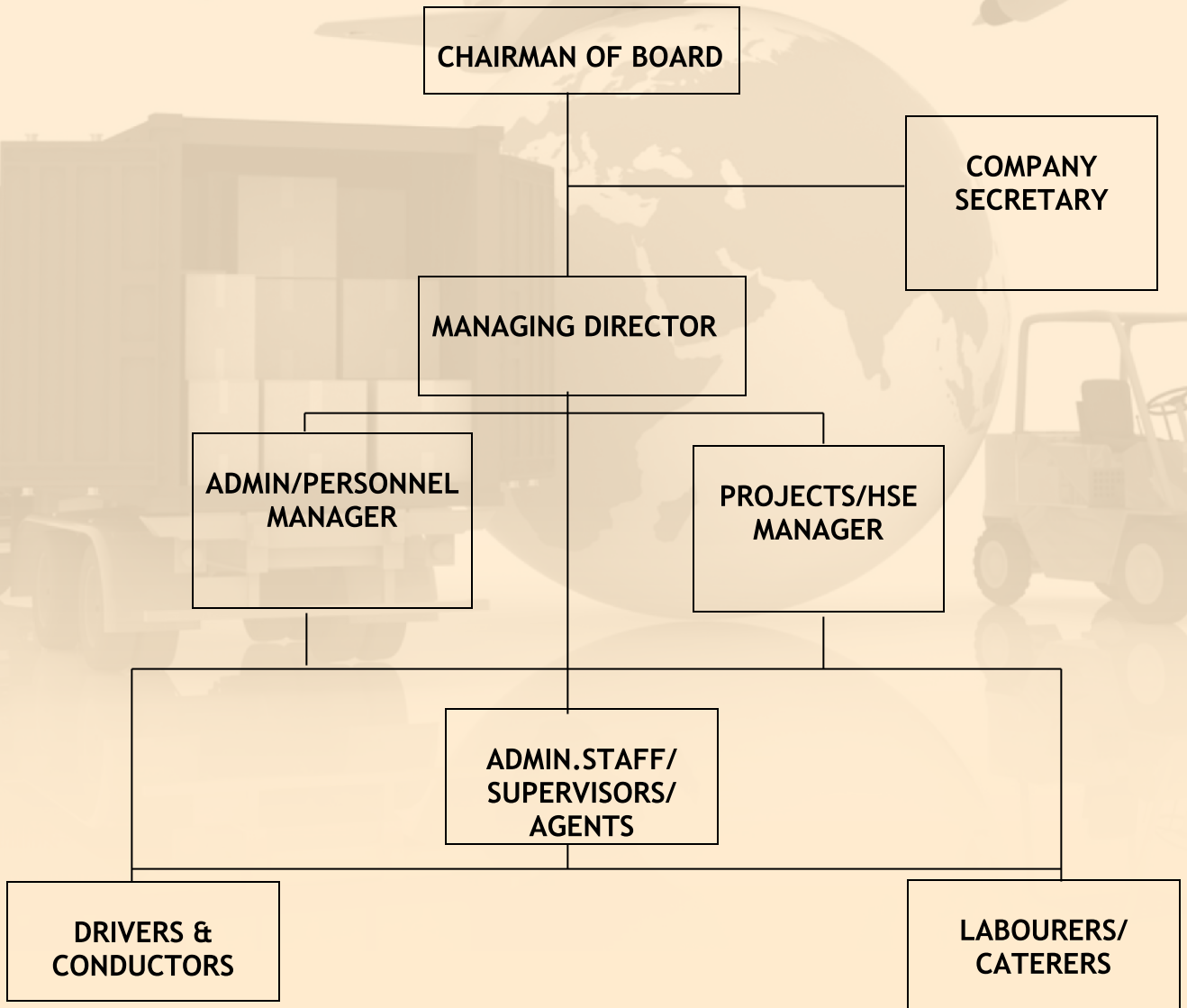
**To develop a fast growing business following the existing business practices by applying the best equipment to satisfy the customer through effective maintenance and customer-focused service task.**

PGIS is committed to personal attention to work, constant technological advancement and continuous improvement. **PGIS** customers are its most important assets and their needs form the core of **PGIS's** future development.

The Team of **PGIS** consist of intellectuals in different spheres to wit; A chairman of Board; A Managing Director; An Accountant and An Engineer.



# CORPORATE ORGANIZATIONAL CHART



## Company' Quality Statement

Prince Global Integrated Services Limited is committed to the following:

- Implementing and ensuring continuous compliance to quality management systems.
- Providing work environment that fosters teamwork and gives job satisfaction.
- Ensuring growth of the company and employees through optimum training and empowerment.
- Providing innovative and effective services to customers.

## Company's Vision

To become a leading indigenous service delivery company. A one stop company for quality service and goods delivery

## Company's Mission Statement

To provide services of the highest quality in the industrial sector.

## Company's Quality Policy

To satisfy and exceed customer requirements through continuous demonstration of quality and active participation of well-motivated employees.

## AREAS OF EXPERTISE



- Hire of heavy and light duty vehicles, gravel & sand supply
- Offshore/onshore equipment supply, agro supply, marine equipment ropes & paints supply, vessels/work tool equipment supply.
- Marine equipment production/manufacturing, safety equipment/tools supply.
- Foodies/toiletries supply
- Logistics/web development, gas cylinder service and refilling, oil tool/NPI and drifting inspection



## HEALTH, SAFETY, ENVIRONMENT & QUALITY

**PRINCE GLOBAL INTEGRATED SERVICES LTD** is committed to continual enhancement of quality, protection of the environment and consideration of health and safety in all aspects of work, to ensure the highest standards of products and services to our clients.

HSE and Quality aspects are integral to and of paramount importance to friendly, safe, and quality solutions. To achieve the same, **PGIS** follows internationally established practices, guidelines or principles such as Plan-Do-Check-Act (PDCA) cycle, Process Approach, Systems Approach, 8-Management Principles, etc.

**PGIS** trust is to provide competitive, safe and innovative solutions in a lawful, ethical and socially responsible manner. The company believes that Occupational Health and Safety personnel, protection of the Environment and Customer satisfaction are of paramount importance to the business, thus it is committed to continuously acquire knowledge and improve working environment; comply with applicable legal and statutory requirements; prevent accidents, injuries and illness in all aspects of operation; prevent wastage and contribute towards environment protection; and, provide training, supervision and support to upgrade the employee skill.

## CONCLUSION & FUTURE FOCUS.

Prince Global Integrated Services Limited is embarking on a radical expansion campaign via two main marketing channels. These two marketing channels may be combined into a most robust network that places the company squarely as a buoyant truck haulage/utility vehicle lease service/retailing company, gravel and sand product supplying company, catering and project managing company capable of satisfying diverse needs of various customers promptly.

Marketing Channel One: The Company will, from time to time, acquire funds from the bank in form of loans to finance the purchase of additional vehicles and equipment as it may require. Within present quarter of the company's financial year, the financial performance (as depicted by its banking activities) show that the business has built up enough monthly cash flow to merit the external funding of multiple units with less than one-third of its expected monthly throughput. The company's objective is to

finance its growing business activities until it achieves its target within the next six months, as well as set-up a four plot operations base in a strategic location within the Niger Delta region of Nigeria.

Marketing Channel Two: The Company will utilize the equity finance function of its bankers when the opportunity avails itself for a large-scale expansion. The situation will arise from the business-to-business marketing that will be embarked upon by the company, in addition to good standards and practices aimed at making PGIS Limited the number one business hub in Nigeria.

While looking forward to a fruitful business relationship with you, for further information, enquiry, etc please refer to our contact information below.

Appendix 1 - Contact information

Appendix 2 - Certificate of Incorporation

Appendix 3 - Tax Registration certificate

Appendix 4 - Company Banner/flyer.

Yours sincerely,

For: **PRINCE GLOBAL INTEGRATED SERVICES LIMITED.**

---

**Mr. ODOÑO PRINCE GOSPEL**

(Chief Executive Officer/Managing Director)



## APPENDIX 1- CONTACT INFORMATION.

1. **Mr. Prince Gospel Odon**  
C.E.O
2. **Mrs. Omomigho Glory Gospel**  
Director
3. **Mr. Ochindo Alale Ollor**  
Chairman/Executive Director
4. **Mrs. Melody Johnny**  
Executive/Development Manager
5. **Mr. Daniel Odon**  
Operational Manager
6. **Mr. Osaremen Johnny**  
Accountant
7. **Barr. Nnamse Ekon**  
Secretary/legal Practitioner  
Wings of Justice Chambers
8. **Benjamin Atonye**  
P.R.O

# MEET OUR MANAGEMENT TEAM



**Mr. Prince Gospel Odonu**  
C.E.O



**Mrs. Omomigho Glory Gospel**  
Director



**Mr. Ochindo Alale Ollor**  
Chairman/Executive Director



**Mrs. Melody Johnny**  
Executive/Development Manager



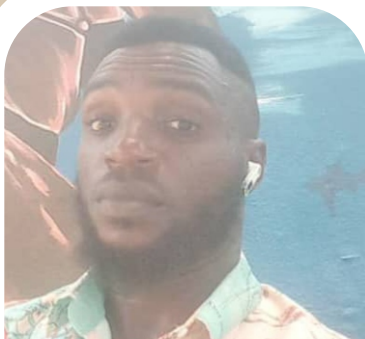
**Mr. Daniel Odonu**  
Operational Manager



**Mr. Osaremen Johnny**  
Accountant



**Barr. Nnamse Ekon**  
Secretary/Legal Practitioner  
Wings of Justice Chambers



**Mr. Benjamin Atonye**  
P.R.O



FEDERAL REPUBLIC OF NIGERIA

**CERTIFICATE OF INCORPORATION**  
OF A  
**PRIVATE COMPANY LIMITED BY SHARES**  
COMPANY REGISTRATION NO. 7077917

The Registrar - General of Corporate Affairs Commission  
*hereby certifies that*

**PRINCE GLOBAL INTEGRATED SERVICES LTD**

*is this day incorporated under the*  
**COMPANIES AND ALLIED MATTERS ACT 2020**

*as a private company limited by shares.*

*Given under my hand at Abuja this 2nd day of August, 2023*



**A. G. Abubakar**  
Registrar - General

APPENDIX 3- TAX REGISTRATION CERTIFICATE



**CERTIFICATE**  
OF TAXPAYER IDENTIFICATION NUMBER



This Certificate is Issued By Joint Tax Board

<b>Taxpayer's Name</b>	<b>PRINCE GLOBAL INTEGRATED SERVICES LTD</b>
<b>TIN</b>	<b>1071467078</b>
<b>Date of Issue</b>	<b>16 August 2023</b>
<b>Tax Authority</b>	<b>FEDERAL INLAND REVENUE SERVICE</b>
<b>Address</b>	<b>7, LANE C, 3RD AVENUE PHASE 2 ELIMINGEWE, ELELEWON, RIVERS, NIGERIA</b>



  
Secretary, JTB

## CONTACT INFORMATION:



No. 7, Lane C, 3rd Avenue, Eliminigwe, Phase II,  
Eelenwo, Obio/Akpor, Rivers State, Nigeria.



+234 (0) 808 433 3959, (0) 806 852 0568,  
(0) 802 929 6347, (0) 818 895 329

